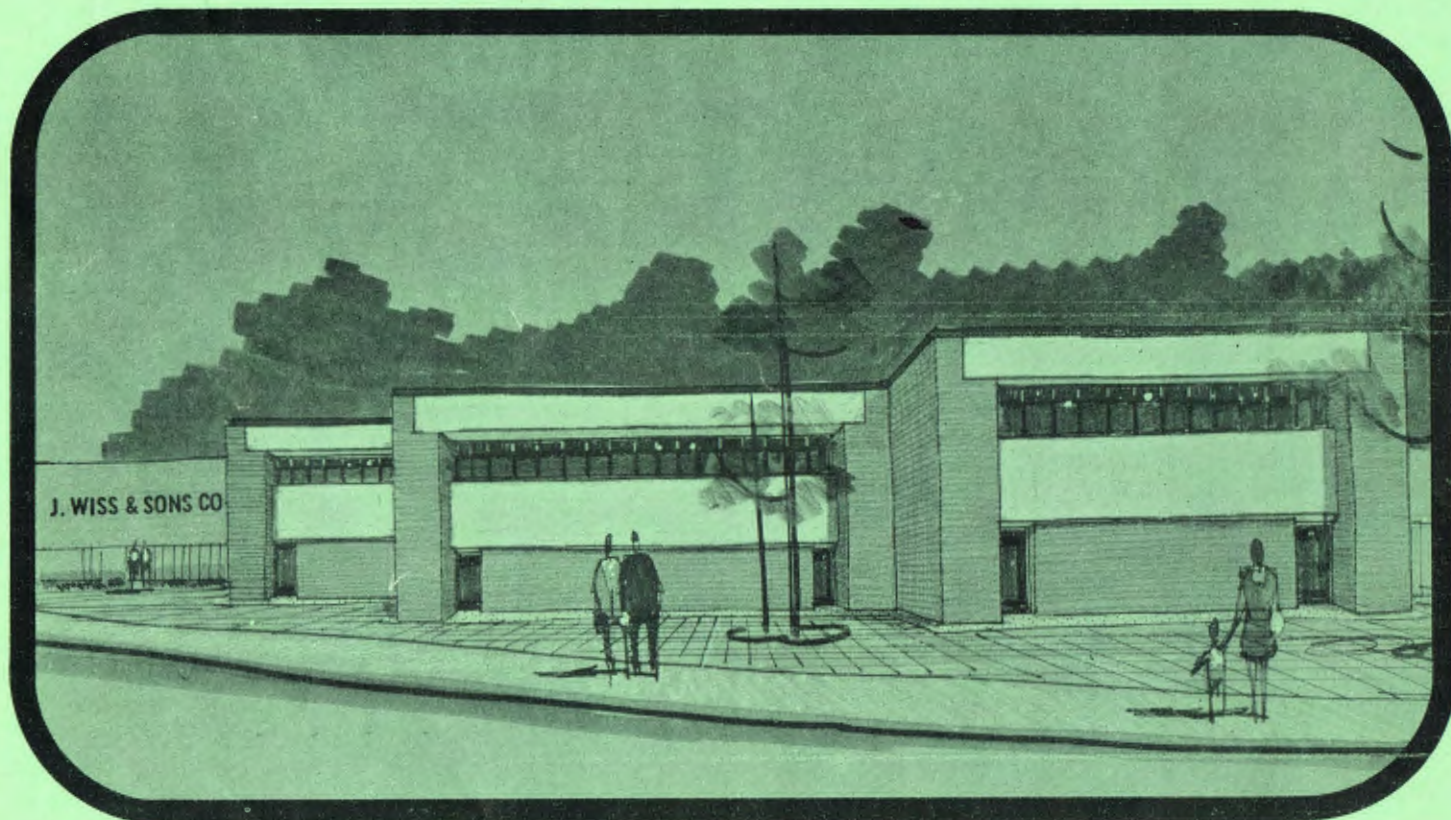


The new look of WISS



THE "ONE TO GO" — This is an artist's sketch of the new office building, which will go up in 1968. This will complete our new building complex.

J. WISS & SONS CO.
33 LITTLETON AVENUE, NEWARK, N. J.

A
NEW
STEEL
WAREHOUSE

B
PRESS ROOM,
TOOL & DIE
ROOM

8C
HEAT TREATING,
DRILL PRESS
& GRINDING



"THREE UP-ONE TO GO!"

"... It is a real pleasure to dedicate this new building, the third in our current expansion and modernization program.

"The completion of this structure adds another 25,000 square feet to our production facilities. This building has been designed to achieve maximum efficiency in the key operations of heat treating and automatic grinding.

"The final project in our current building program will be our new office building, to be started shortly. This will also add to our manufacturing facilities by releasing space in our main plant for production operations.

"In its 120 years of continuous operation, J. Wiss & Sons has been devoted to the ideal of the best in quality and service for its customers. This building program is tangible assurance to those we serve that this tradition will be carried forward..."

(See inside for news and pictures of our newest building, officially inaugurated at a party for employees on December 20th, 1967)



RIBBON CUTTING CEREMONY - President Richard R. Wiss (center) snips a metal ribbon to formally open the new 25,000-square-foot building that houses grinding and heat treating operations.

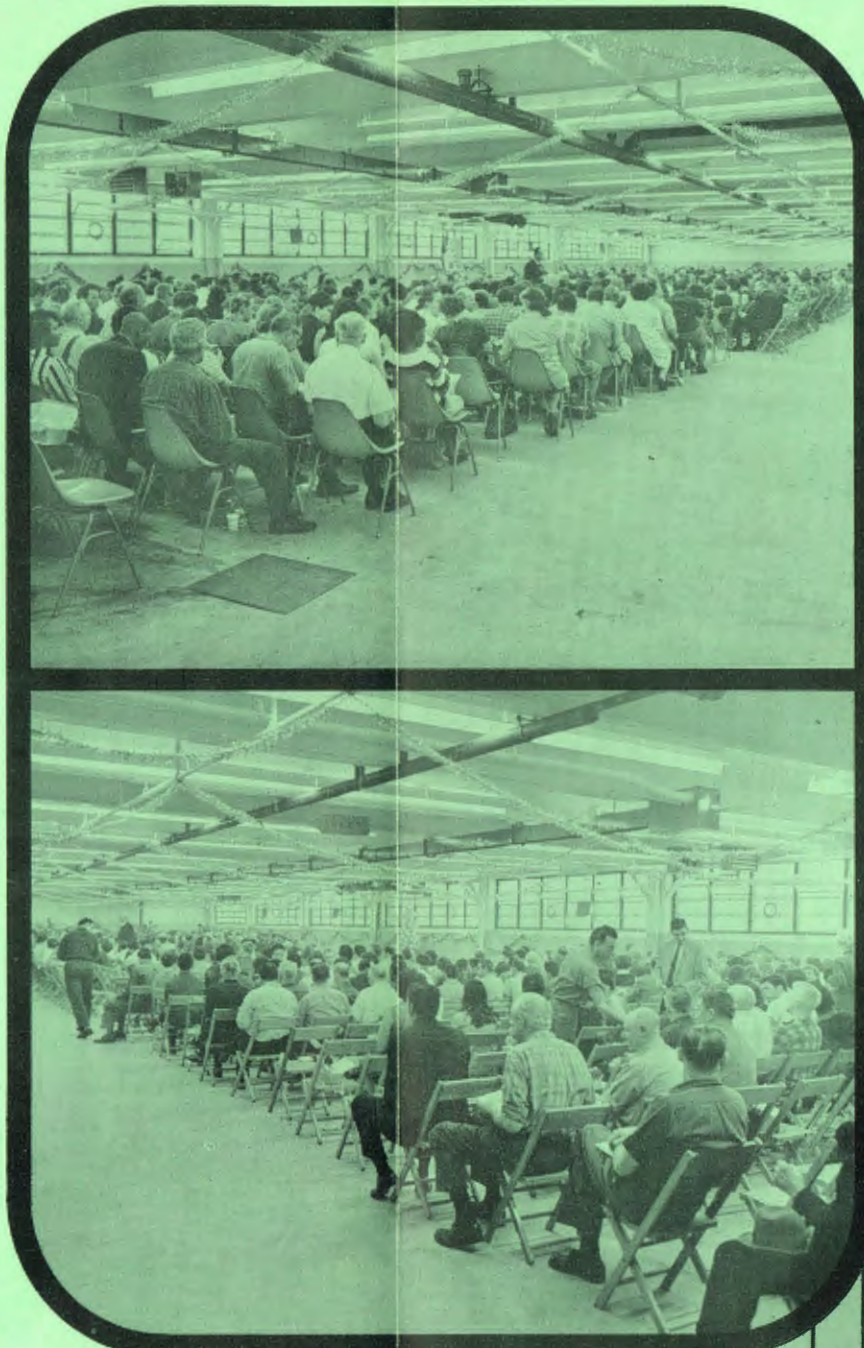
Assisting in the ceremony are Executive Vice President and Treasurer Frederick D. Wiss (left) and William Hausmann, Manager of Manufacturing.

NEWARK SUNDAY NEWS
January 21, 1968

B 27
Sec. 7

Wiss Adds Plant Space

An additional 25,000 square feet of production space was added to the manufacturing facilities of J. Wiss & Sons Co. in Newark as 1967 came to a close. The new building, dedicated Dec. 20, adds to the grinding and heat treating facilities of the 119-year-old manufacturer of shears, scissors, pinking shears and metal snips. The new building is the third to be completed in a major expansion program, started in 1966. A new office building will be started early next year. All the new buildings are in the vicinity of the firm's main plant at 33 Littleton Ave. Wiss also has a plant in Maplewood, chiefly for the production of garden shears and tinners' snips. The company employs over 900 people.



A GOOD TURN-OUT — To help inaugurate the new plant, the Wiss team turned out in force. The holiday event was highlighted by a welcoming talk by Dick Wiss, a box lunch and gifts for everyone.



STAGE ONE: It was just about a year ago that Building A (steel warehouse) and Building B (tool and die shop) were erected as the first stage of our expansion and modernization program. At the same time an attractive metal facade and new windows were added to the main building.



ALL DRESSED UP AND READY TO GO

LOCAL NEWSPAPERS ANNOUNCED THE EVENT WITH CLIPS LIKE THE ABOVE